

# Broca Canhão

Furação Profunda

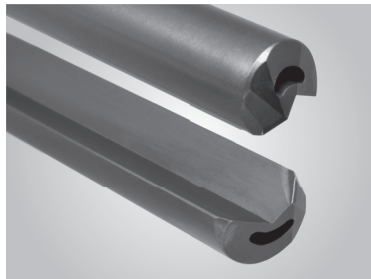
Broca Canhão em 1 e 2 cortes com ponta de metal duro soldado,  
1 corte integral em metal duro e com pastilhas intercambiáveis



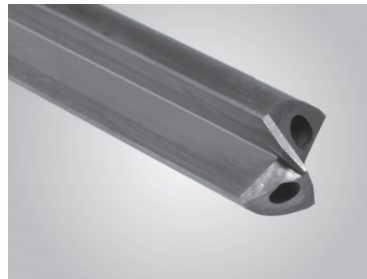


## Broca Canhão – Fabricação Nacional Em 1 e 2 cortes com ponta de metal duro soldado

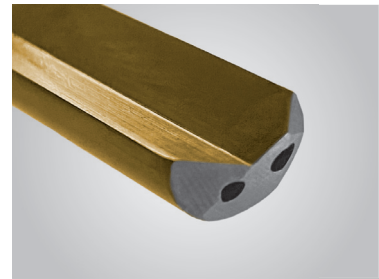
Capacidade de  $\varnothing$  3,0 – 38,0 mm no comprimento conforme projeto



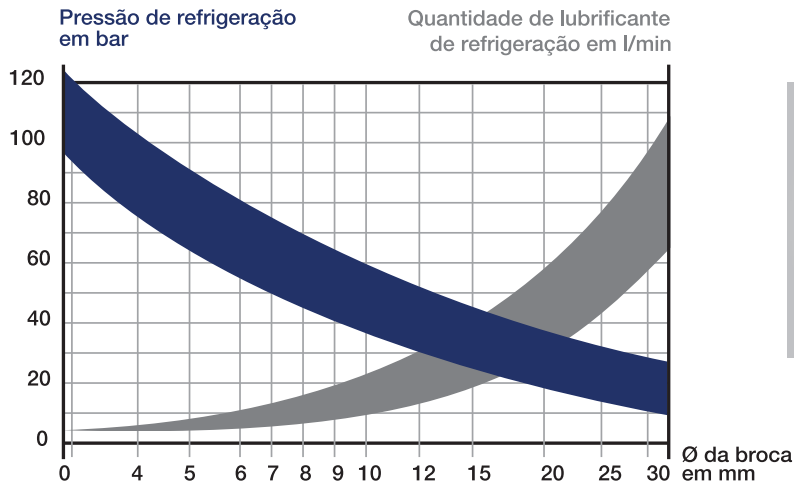
Broca Canhão em 1 Corte



Broca Canhão em 2 Cortes

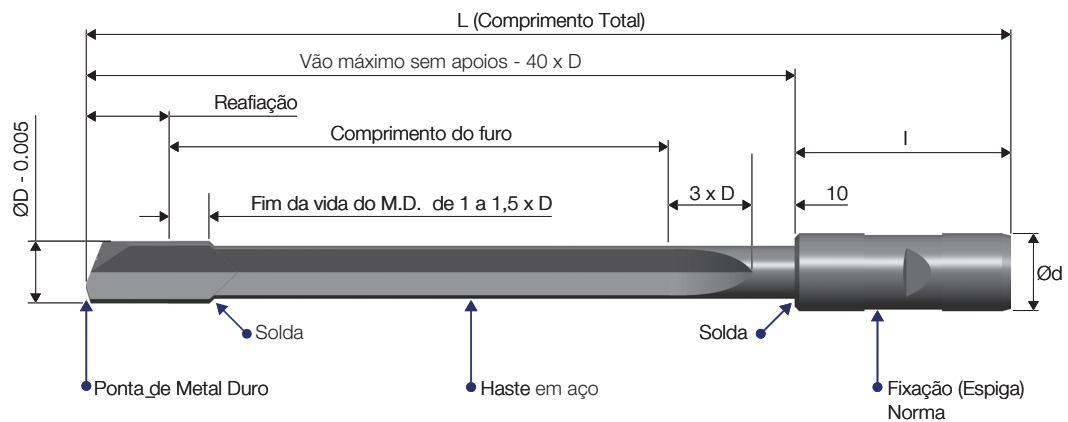


Broca Canhão em 1 Corte



Dispositivo de afiação de broca canhão  
1 corte de  $\varnothing$ 3.0 a  $\varnothing$ 38.0mm

## Modelo para Projeto de Broca Canhão - Ponta soldada

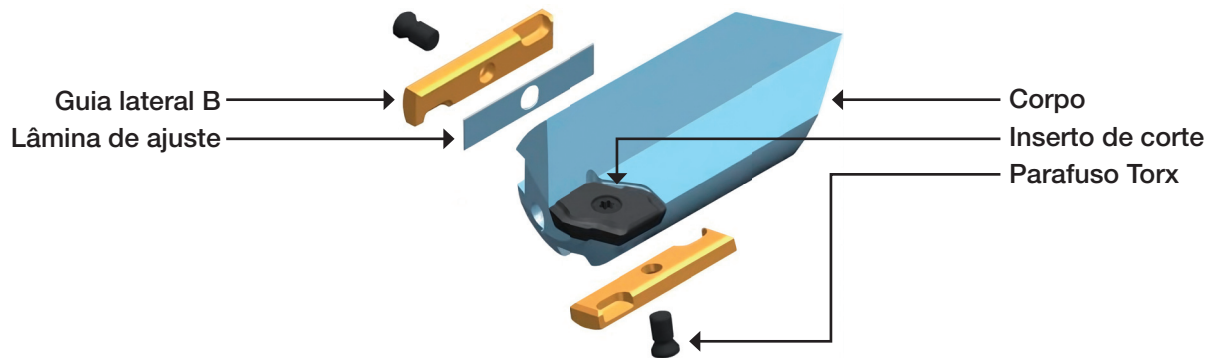




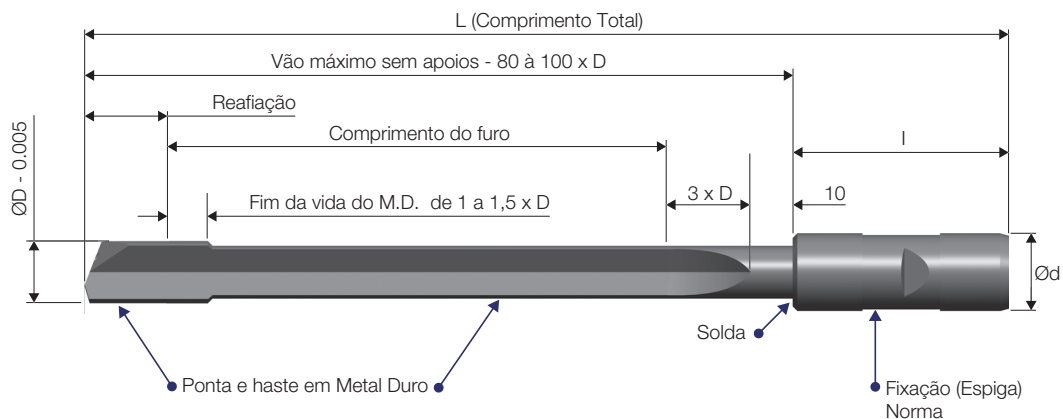
## Broca Canhão – Fabricação Alemã Em 1 corte integral em metal duro de Ø 0,8 – 12,0 mm



## Broca Canhão com Pastilhas Intercambiáveis Ø 12,0 – 28,0 mm



## Modelo para Projeto de Broca Canhão - Integral em metal duro





**ALEMANHA**  
**NAGEL Maschinen- und  
Werkzeugfabrik GmbH**  
Oberboihinger Straße 60  
72622 Nürtingen  
P: +49 (0) 7022 6050  
F: +49 (0) 7022 605250  
info@nagel.com  
www.nagel.com

**BRASIL**  
**NAGEL do Brasil  
Máquinas e Ferramentas Ltda.**  
Av. Brasília, 125  
13.327.900 Salto-SP  
P: +55 (0) 11 4028 9700  
info@nagel.com.br  
www.nagel.com.br

**CHINA**  
**NAGEL Machinery Trading (Beijing)  
Co., Ltd.**  
Rm. 2810, Jing Guang Center  
Hu Jia Lou, Chao Yang District  
100020 Beijing  
P: +86 (0) 10 6597 8589  
F: +86 (0) 10 6597 8569  
info@nagel-tbt.com.cn  
www.nagel-tbt.com.cn

**GRÃ-BRETANHA**  
**PERMAT Machines Ltd.**  
Station Road  
Coleshill-Birmingham  
B 46 1JG  
P: +44 (0) 1675 463351  
F: +44 (0) 1675 465816  
info@permat.com  
www.permat.com

**ÍNDIA**  
**NAGEL Special Machines Pvt. Ltd.**  
70/1 Mission Road  
Bangalore 560027  
P: +91 (0) 80 2227 2781  
F: +91 (0) 80 2227 6324  
info@nagelindia.in  
www.nagelindia.in

**JAPÃO**  
**NAGEL-AOBA Precision Co., Ltd.**  
2-6-16 Senjuazuma  
Adachi-ku  
120-0025 Tokyo  
P: +81 (0) 3 3881 1271  
F: +81 (0) 3 3881 8132  
info@nagel-aoba.jp  
www.nagel-aoba.jp

**MÉXICO**  
**NAGEL Precision de Mexico**  
Blvd. Jaime Benavides # 210  
Fracc. Molinos Del Rey C.P. 25903  
Ramos Arizpe, Coahuila Mexico  
P: +52 (844) 416 8049  
F: +52 (844) 416 7672  
office.mexico@nagelusa.com  
www.nagelusa.com

**EUA**  
**NAGEL Precision Inc.**  
288 Dino Drive  
Ann Arbor  
MI 48103  
P: +1 (0) 734 4265 650  
F: +1 (0) 734 4265 649  
info@nagelusa.com  
www.nagelusa.co

